

Remote access to PCs of the Bioimaging Core Facility, AU Health

In order to access our PCs remotely, please get permission through Nina Glöckner or Anna Lorentzen (imaging@biomed.au.dk).
If you do not have access to the PC, please refer to the pricelist: <https://imaging.au.dk/services-pricing/>

What we need for setting you up:

- 1) Your **auID** (e.g. au123456)
- 2) The **PC name** (e.g. D12345) ! [Only AU-registered equipment – for private equipment you can get access via MoxyViewer]
- 3) To which **PC number** (e.g. PC1+PC2)

Follow these steps to access:

- 1) Open Cisco AnyConnect and connect to VPN
- 2) Get access through Remote Desktop (shown below on both PC and Mac)

You can access PC1, PC2, PC3, PC5 and the Multiphoton-system PC remotely.

Booking is done from here: <https://imaging.au.dk/booking/>

PC names:

Imaging PC1: D39574

Imaging PC2: D12238

Imaging PC3: D08727

Imaging PC5: D43526

Multiphoton system PC: Given to you at the system training.

1) Open Cisco AnyConnect to connect to VPN

If you are at Aarhus University using a **wired LAN connection**, you can skip this step.
If you are using Wifi either from AU or from anywhere else you need to use VPN.

Please follow these steps:

0) Download and install Cisco AnyConnect VPN

Guide: <https://medarbejdere.au.dk/en/administration/it/guides/network/vpn-remoteau.dk/#c2541333>

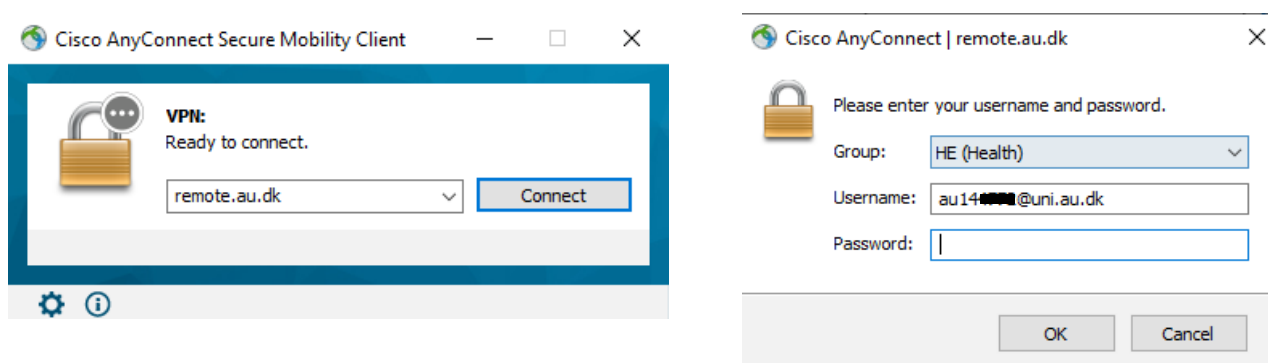
Download: <https://remote1.au.dk/+CSCOE+/logon.html#form title text>

1) Open Cisco VPN (see below)

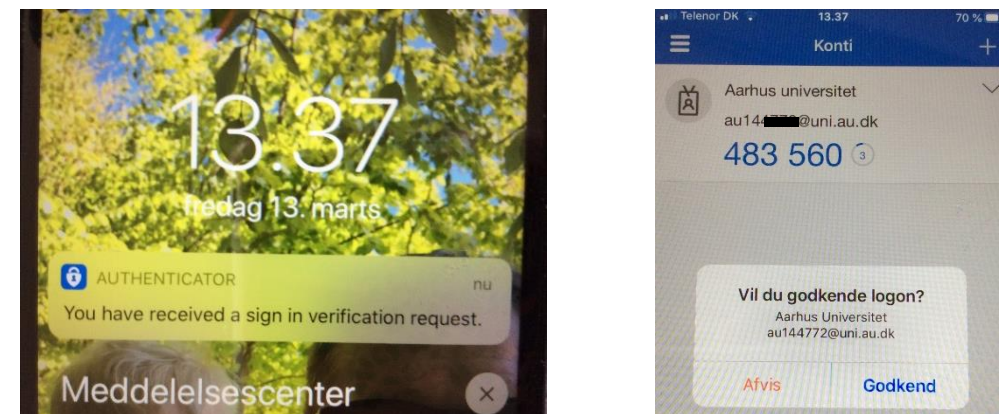
2) Approve on your phone with the Authenticator app (see below) or with the 6 digits of the text message

Guide: <https://medarbejdere.au.dk/en/administration/it/guides/security/twostepauthentication/>

1) This step is at your computer



2) This step is on your phone (requires installation of Authenticator)



2) Open "Remote Desktop"

Open "Remote Desktop"

- Type in the PC name with the extension ".uni.au.dk", see below ex: d39574.uni.au.dk

PC names:

Imaging PC1: D39574,

user: shd-bioimaging

password: Auim... ..9

Imaging PC2: D12238,

user: shd-bioimaging

password: Auim... ..9

Imaging PC3: D08727,

user: shd-bioimaging

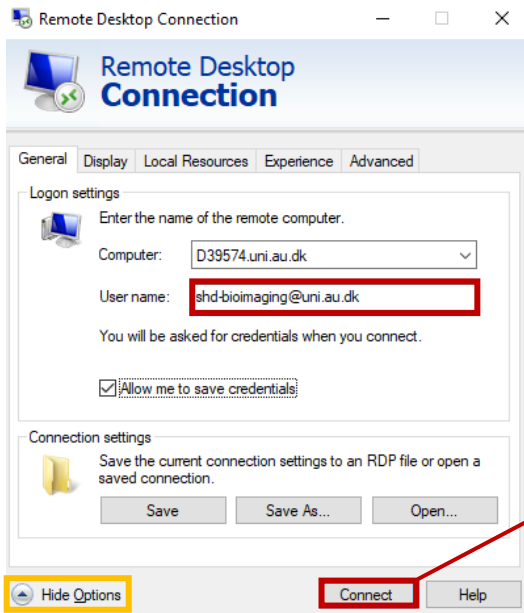
password: Auim... ..9

Imaging PC5: D43526

user: shd-bioimaging

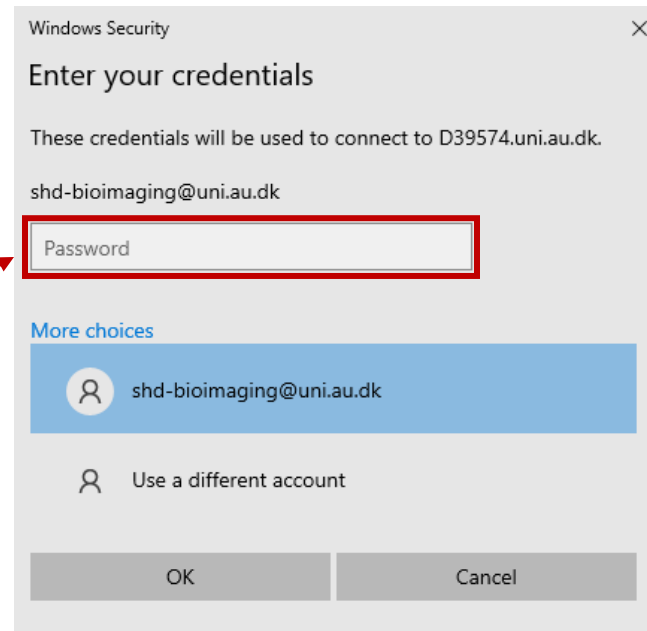
Password: Auim... ..9

- Change the user and password (see red box below)



Don't use your personal auID but the

shd-bioimaging with the new PW (received by mail)

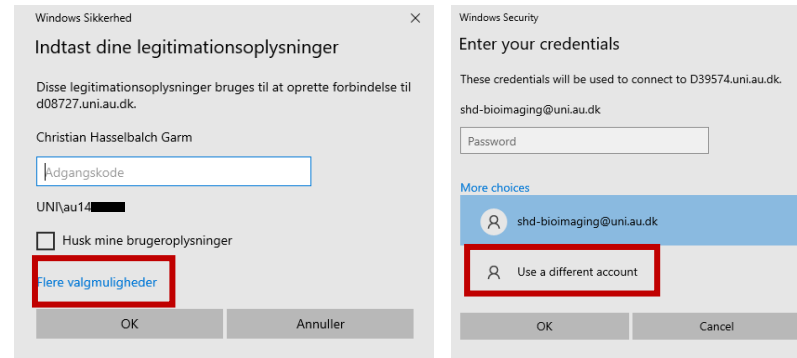


2) Open “Remote Desktop”

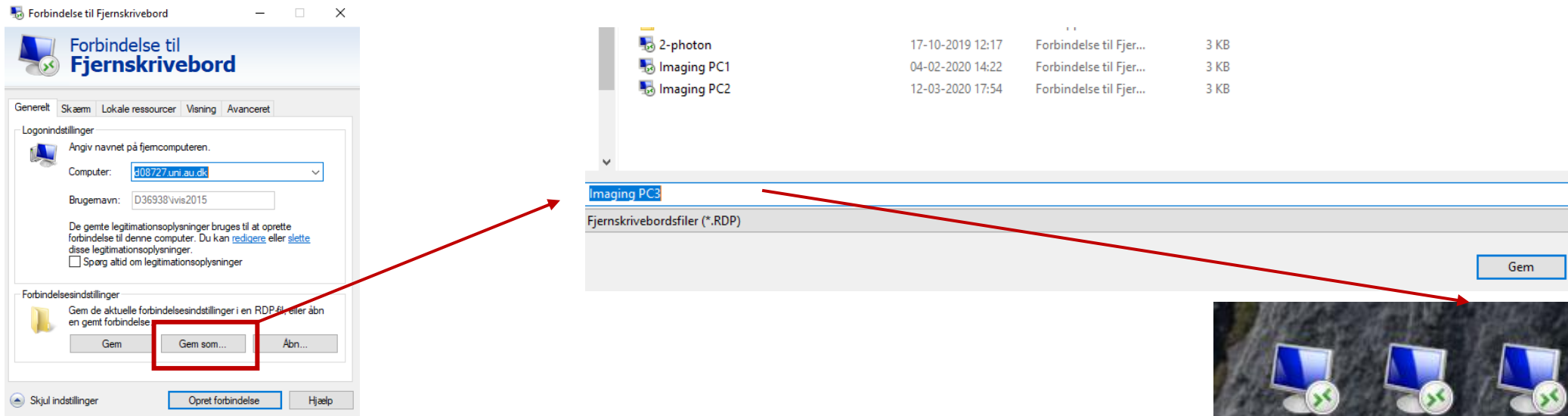
Troubleshooting:

Did you accidentally use your own auID instead of the shd-bioimaging?

→ **Change user**



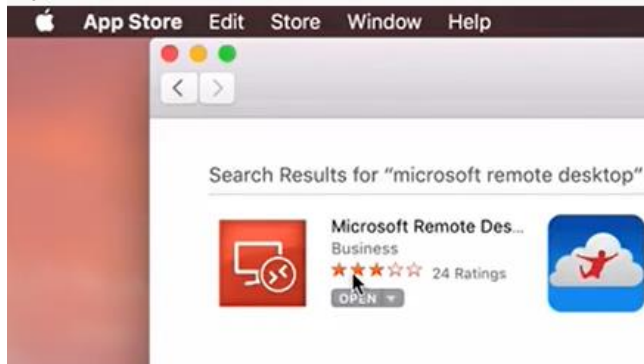
For your convenience: save the remote PCs on your desktop



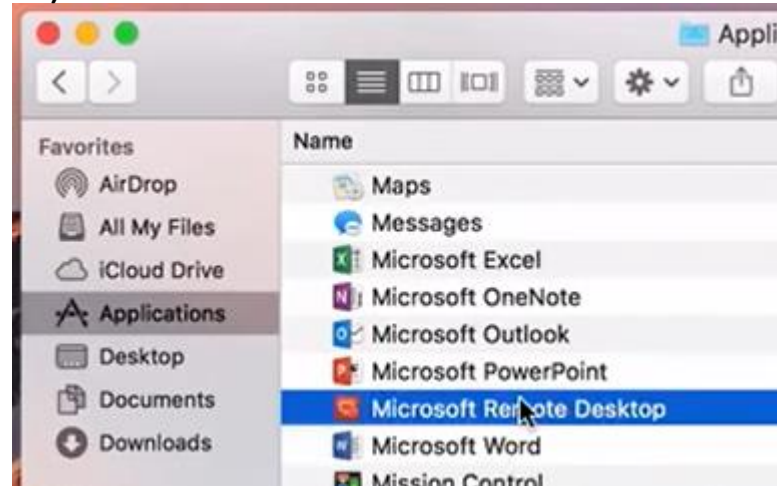
For MAC users

- 1) Download "Microsoft Remote Desktop" in App Store and
- 2) Open it in Applications
- 3) Type in PC names and password similar to the PC guide above

1)



2)



3)

