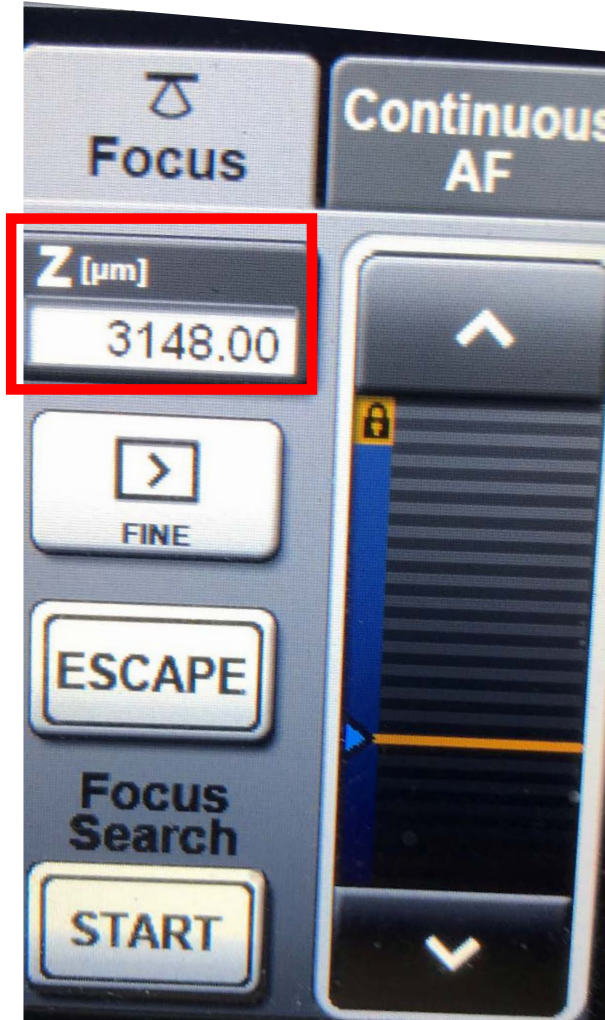


When changing stage insert, please refer to the following guide to set Z-limits in cellSens

Set the Z-limit to the stage insert you need by the steps in the following pages. Always leave the system with the universal slide holder and Z-limit 3148um

Check the Z-limit (red box below) in the touch pad control and focus to the limit **without a stage insert to avoid objective lenses crash**



Z-limit for universal slide holder: 3148 um

Universal slide holder



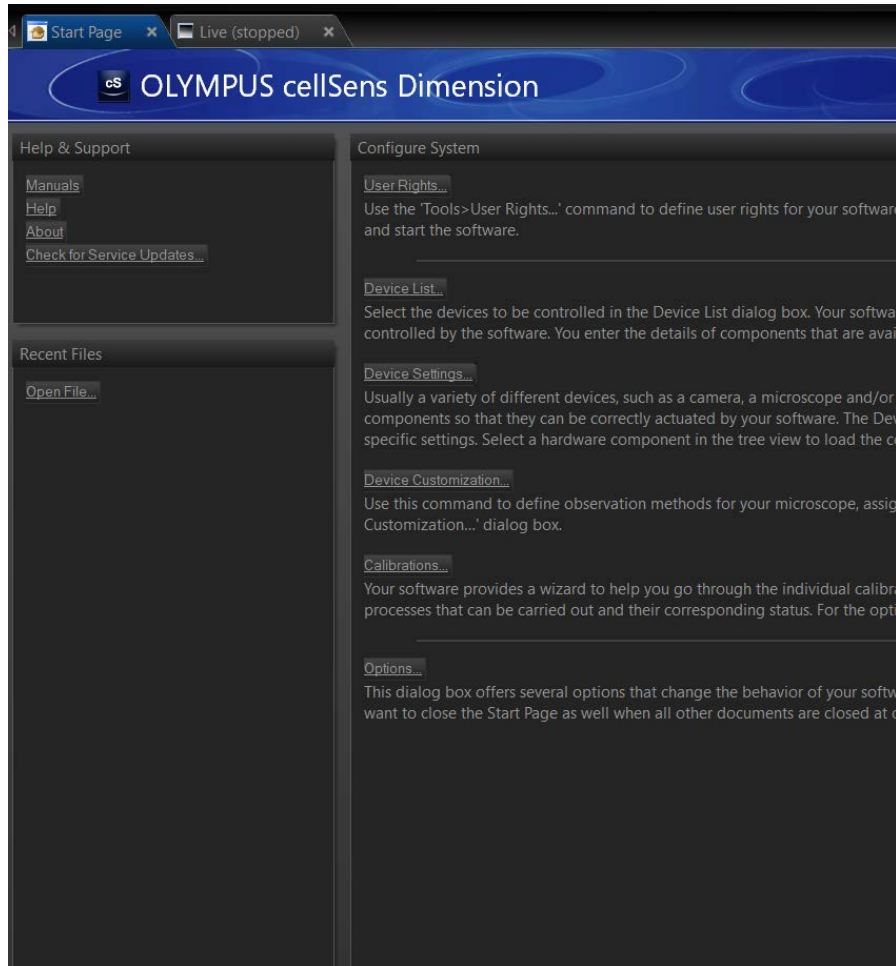
Custom POC-R slide holder



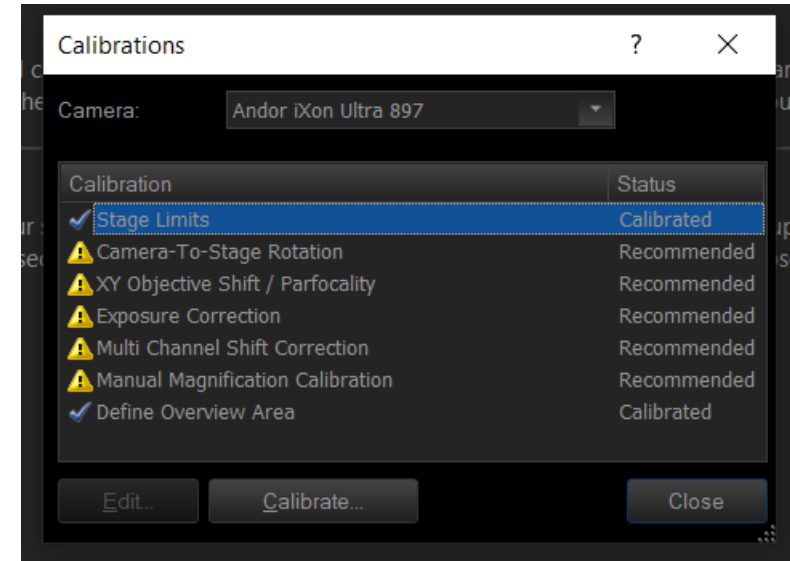
Z-limit for custom POC-R slide holder: 5672um

Note: You can use a cover slide like this to test focus before you work on samples

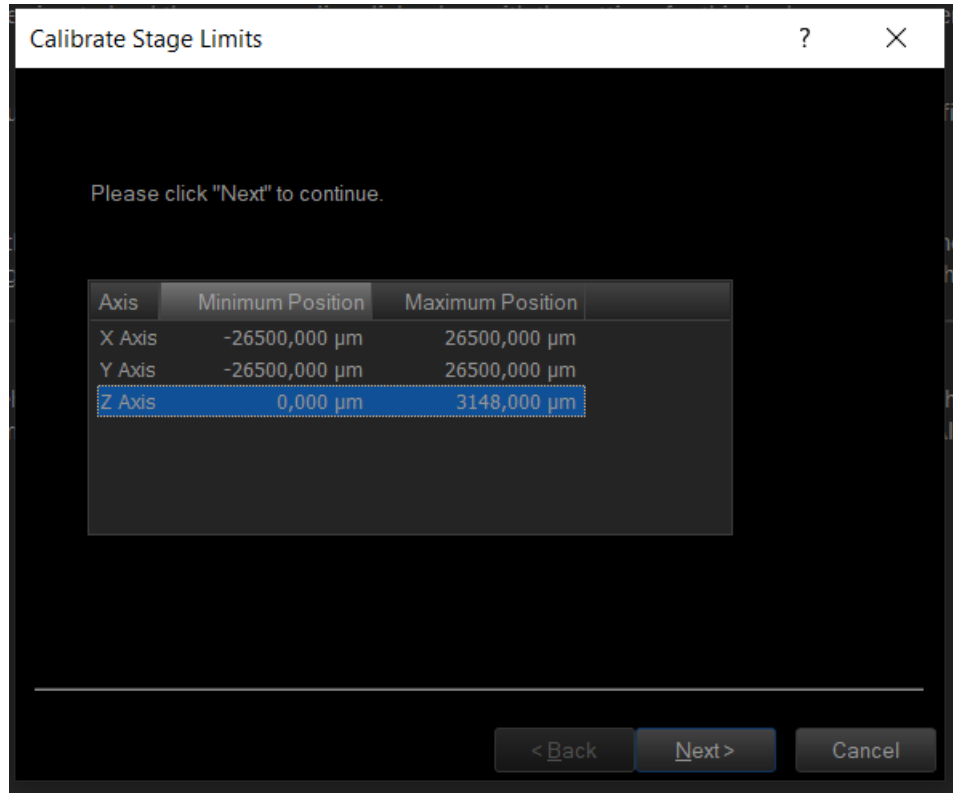
1) Go the "Start page" and open "Calibrations"



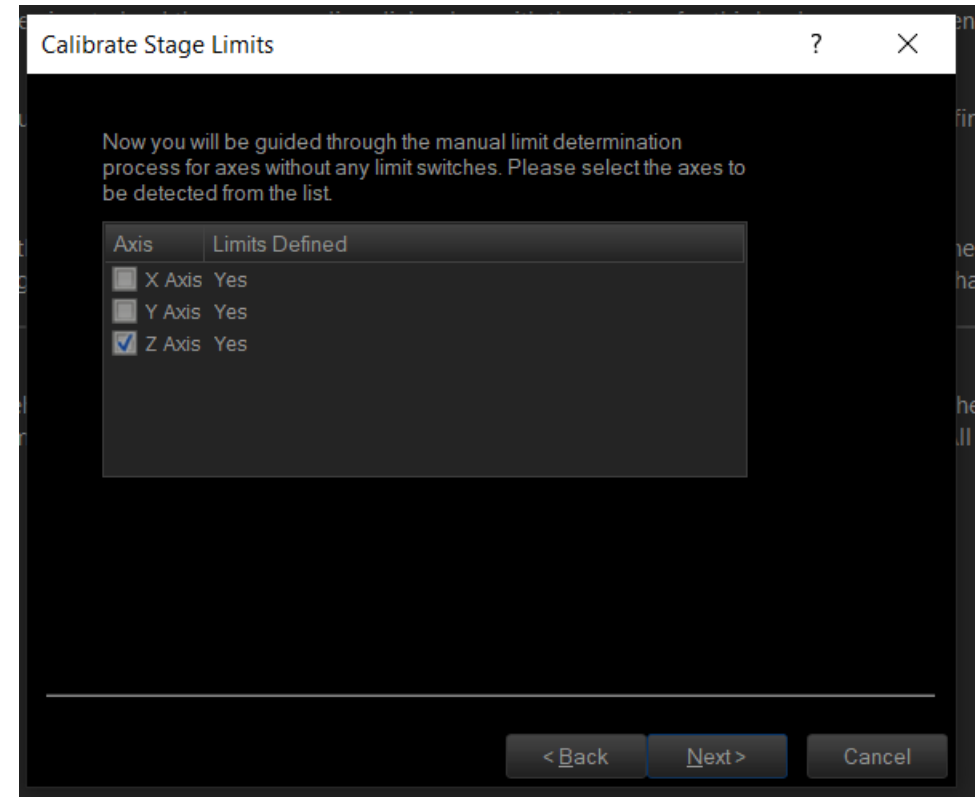
2) Press "Stage limits" and press "Calibrate"



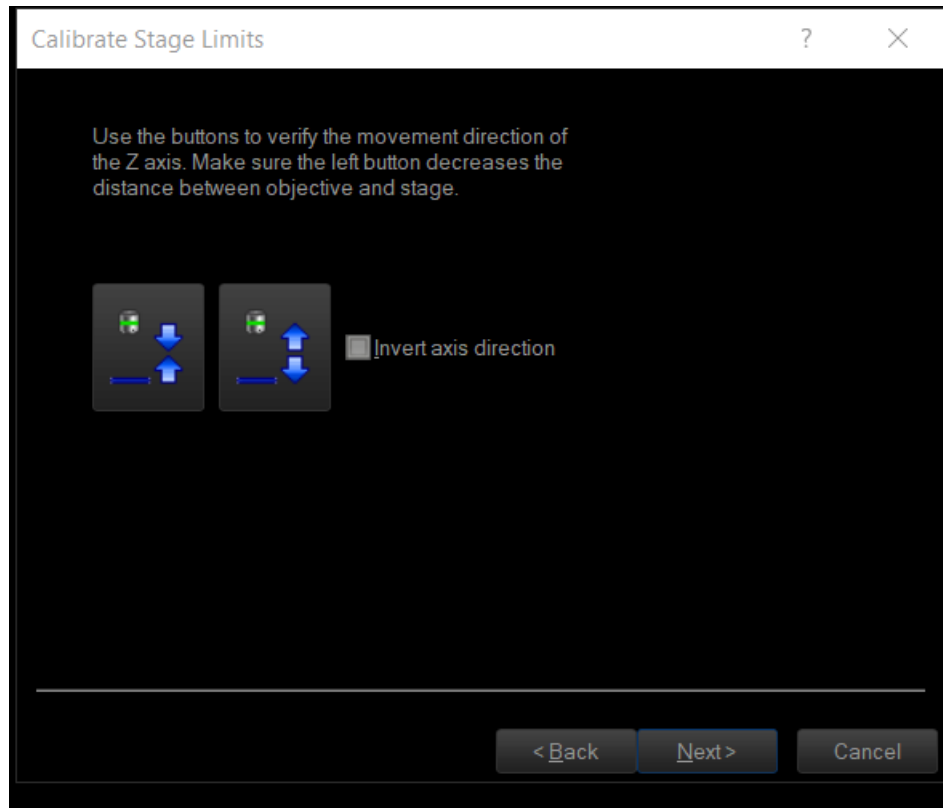
3) Press "Z Axis" and "Next"



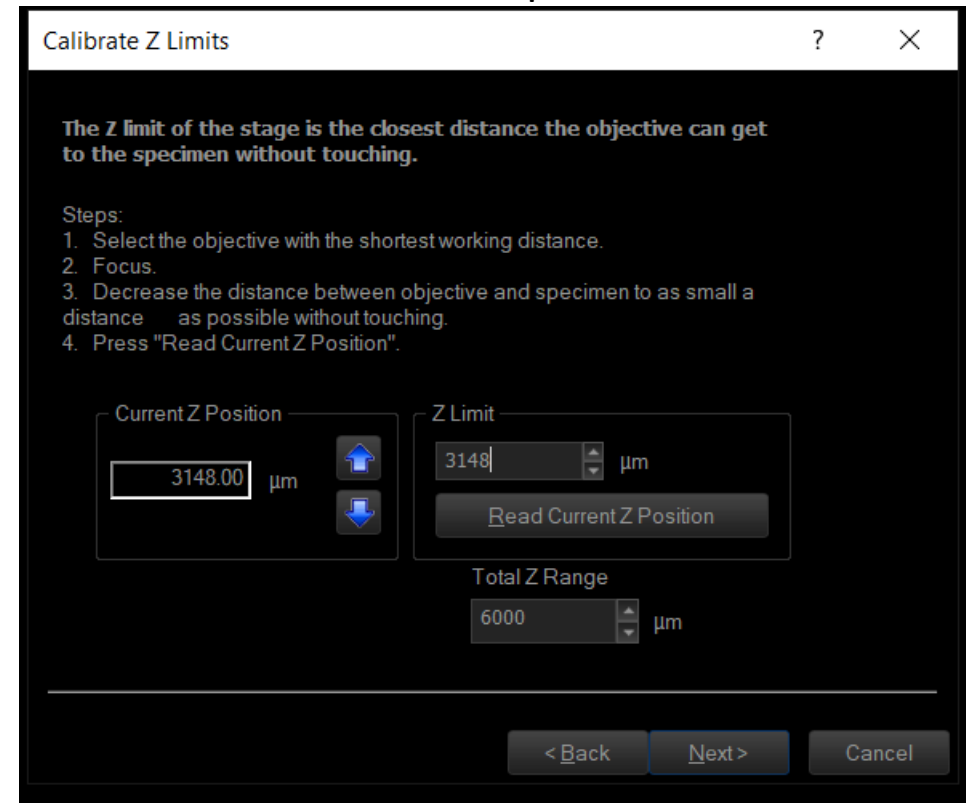
4) Activate only "Z axis" and "Next"



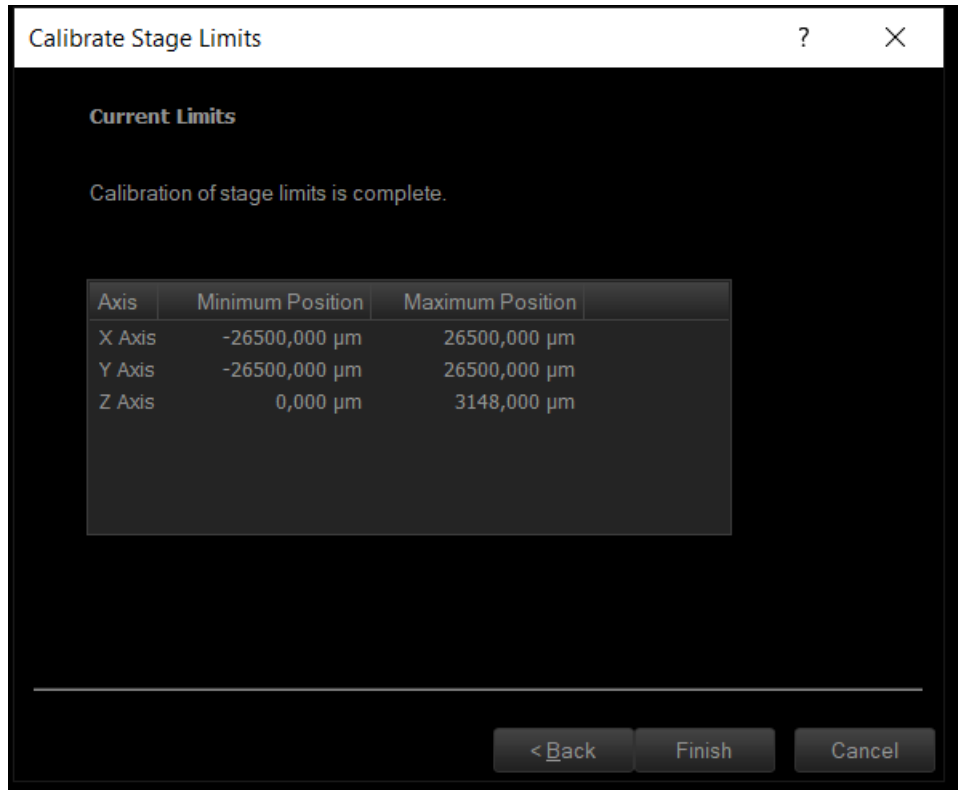
5) Skip this step with "Next"



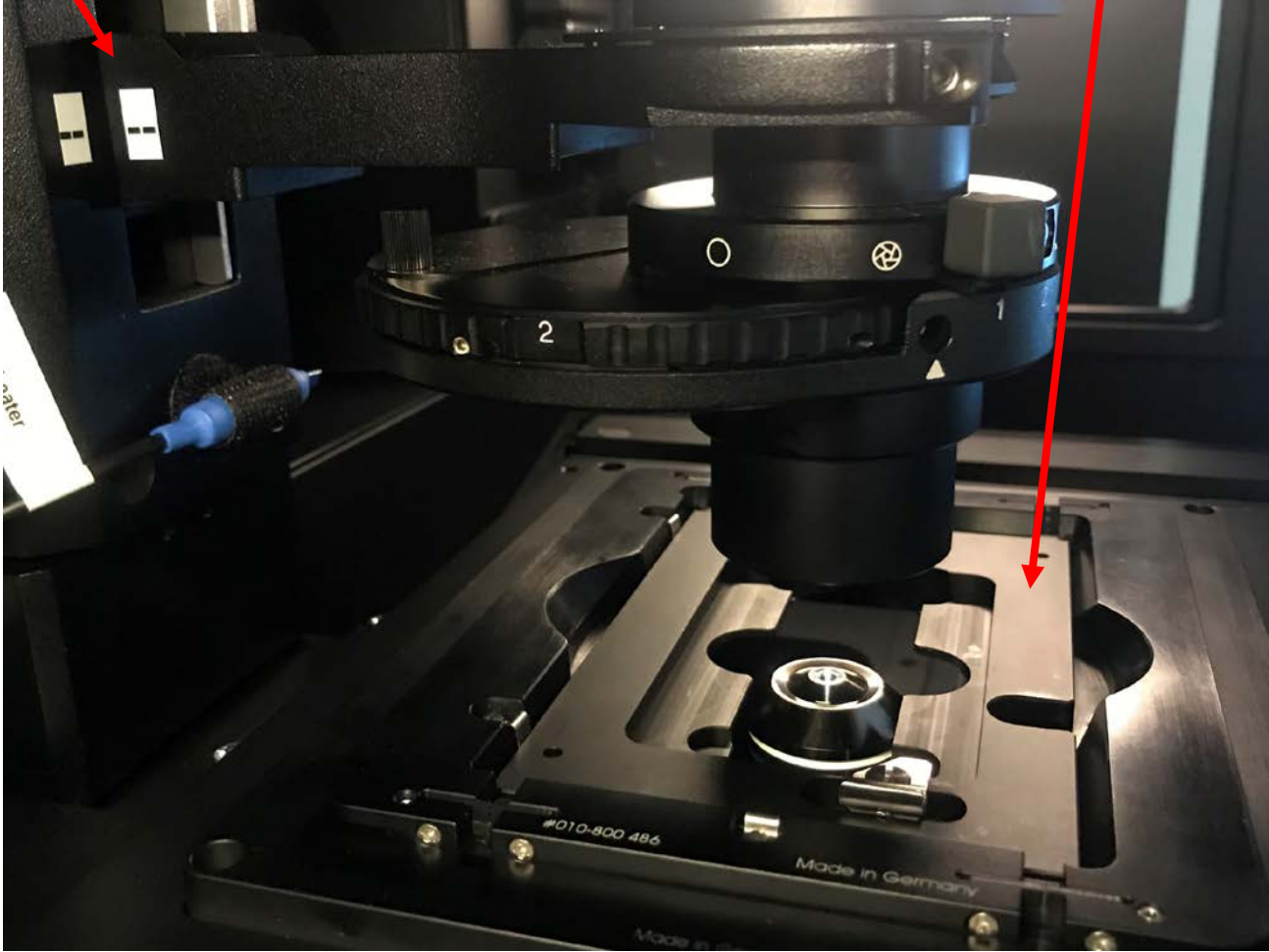
6) Follow the instructions or simply type in the two values in Z-limit and press "Next" "Calibrate"



7) Press Finish and you are done



This is the way you want to leave the system! Always with the "Universal stage insert" and with the condensor high indicated by white lables



Note: you adjust the condensor by thus knob

