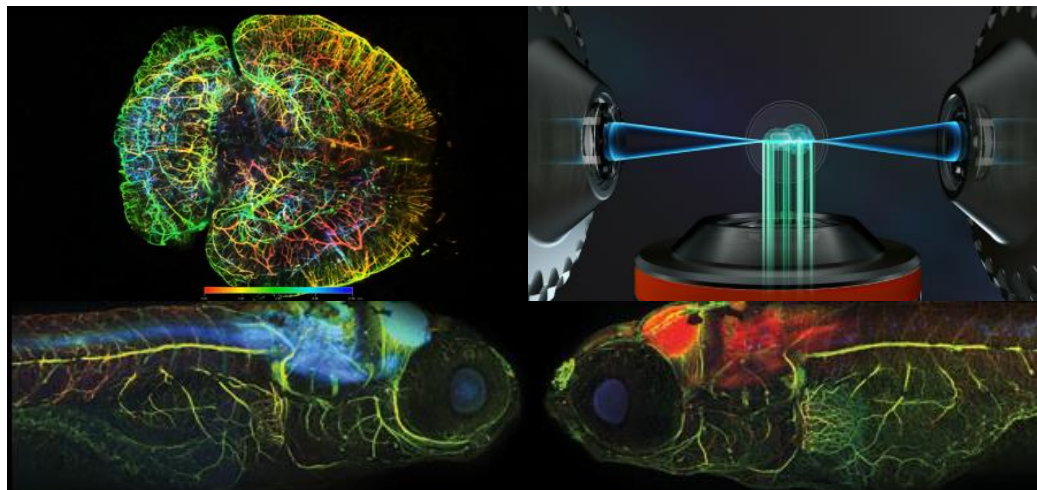


New Lightsheet for multiview imaging of living and cleared Specimens

October 2021
Aarhus University,
Demo installation ZEISS Lightsheet 7
Bioimaging Core Facility at Department of Biomedicin



Light sheet fluorescence microscopy (LSFM) with its unique illumination principle is ideal for fast and gentle imaging of living and cleared Specimens. The exceptional stability of Lightsheet 7 lets you observe living samples over extended periods of time — even days — with less phototoxicity than ever before.

ZEISS Lightsheet 7 - Microscope and application seminar.

Applications specialist Maria Trulsson
Monday Oct. 11., 2021, 14.00 – 15.00.
Tuesday Oct. 12., 2021, 10.00 – 11.00
The Skou Building 1116 – room 151

ZEISS Lightsheet 7 - Hands-on workshops.

Applications specialist Jacques Paysan
Tuesday, Oct. 12. 8.30 – 12.00 and 13.00-16.30
Wednesday, Oct. 13. 8.30 – 12.00 and 13.00-16.30
Thursdays, Oct. 14. 8.30 – 12.00 and 13.00-16.30
The Skou Building 1116 – room 270

If you want to join one of the seminars or/and hands-on sessions. Please send a mail directly to: Jesper Kielsgaard, Carl Zeiss A/S jesper.kielsgaard@zeiss.com

We look forward to seeing you

Nina Glöckner, Bioimaging Core Facility manager, AU
Anna Lorentzen, Bioimaging Core Facility manager, AU
Jesper Kielsgaard, Region Sales Manager, ZEISS

nig@biomed.au.dk
anna@mbg.au.dk